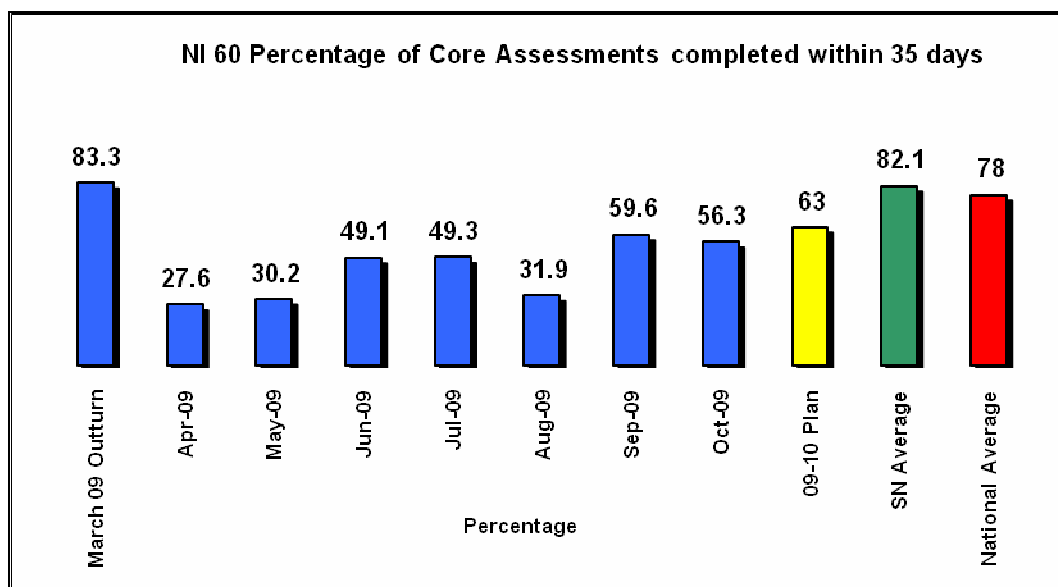
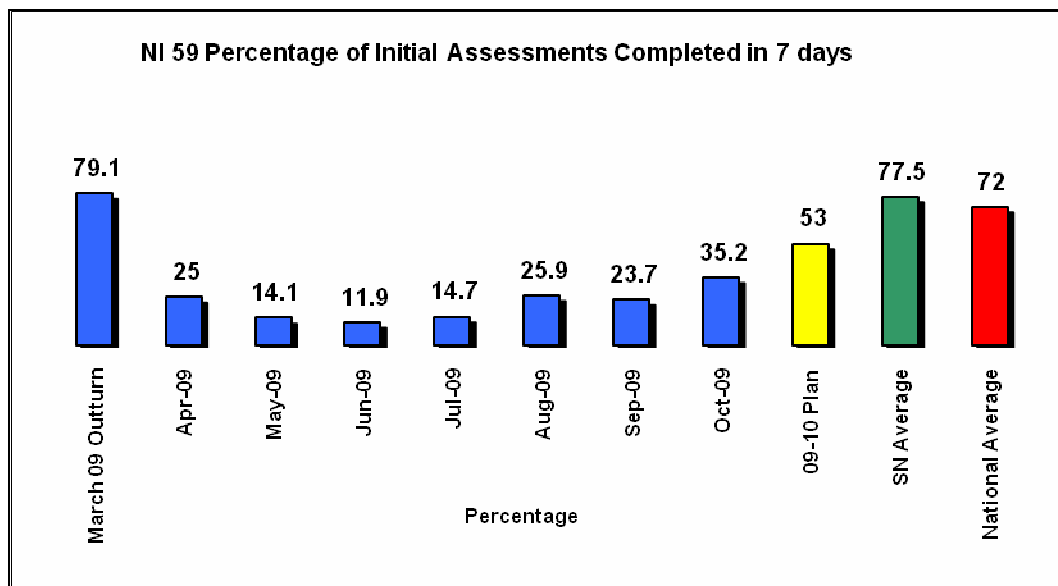
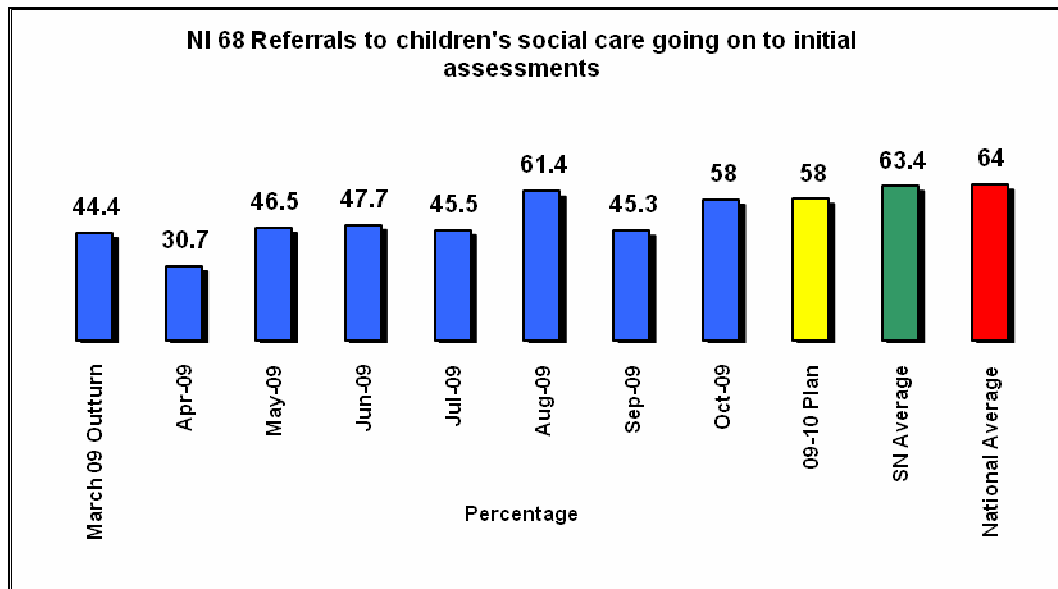
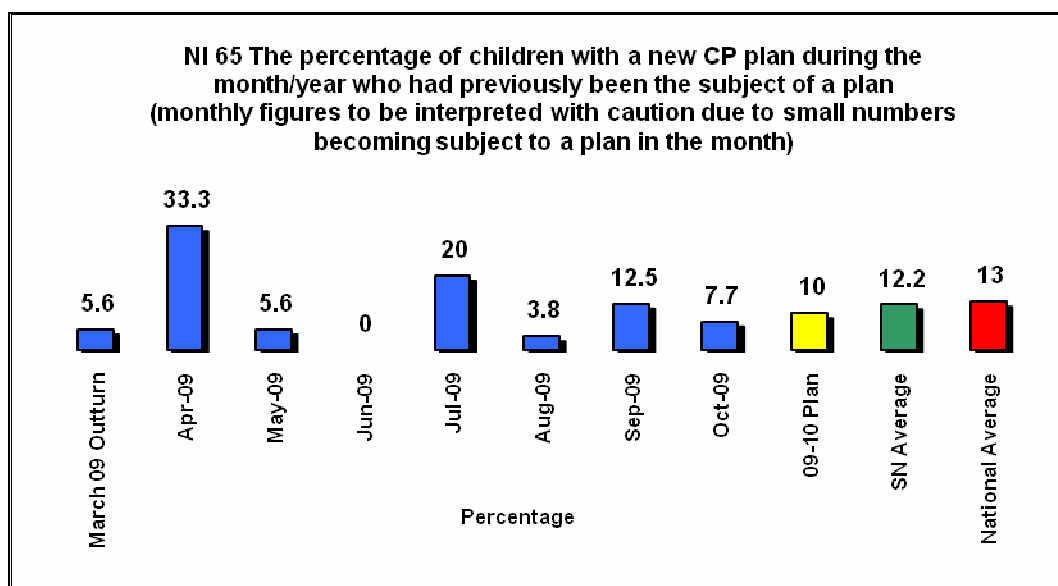
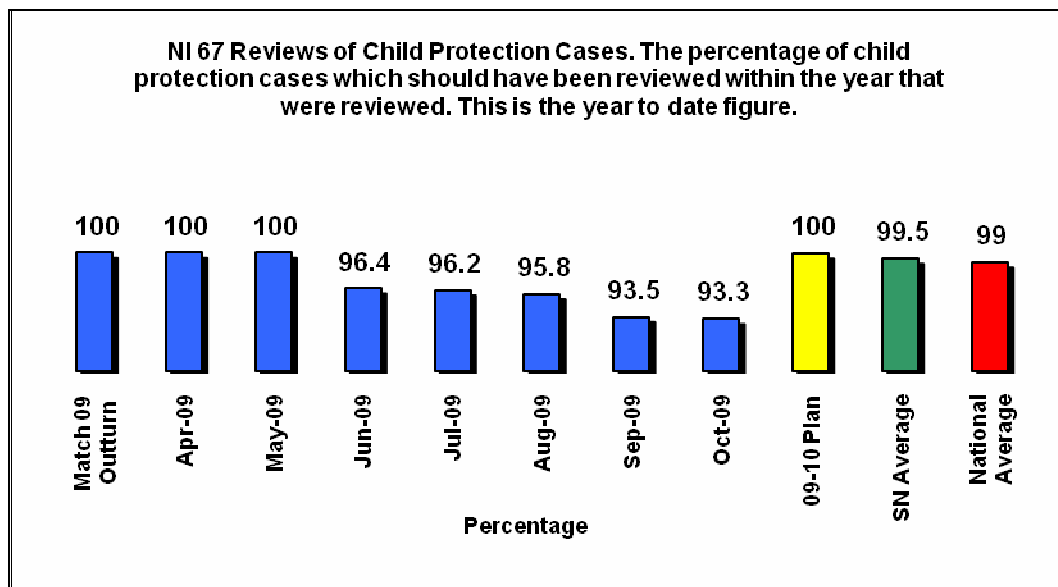
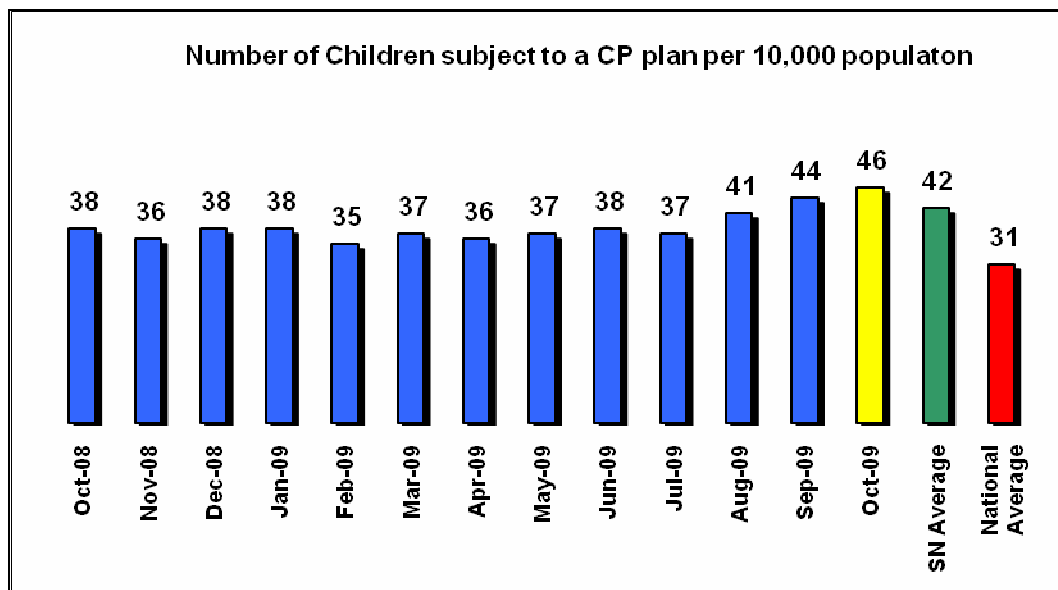


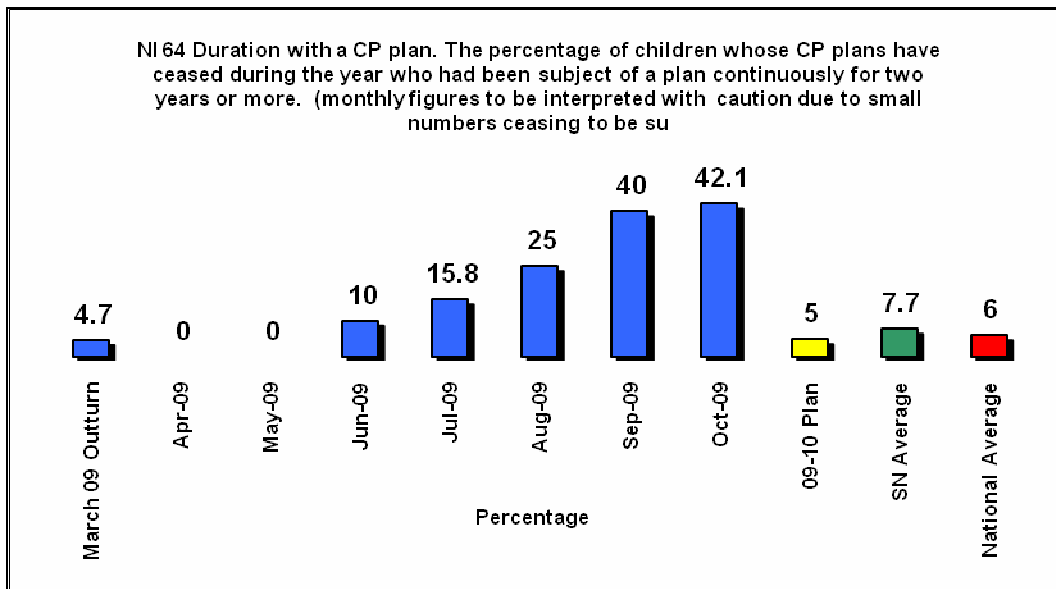
Appendix 1 - Children and Families National Indicators 2009-10

Referrals and Assessments

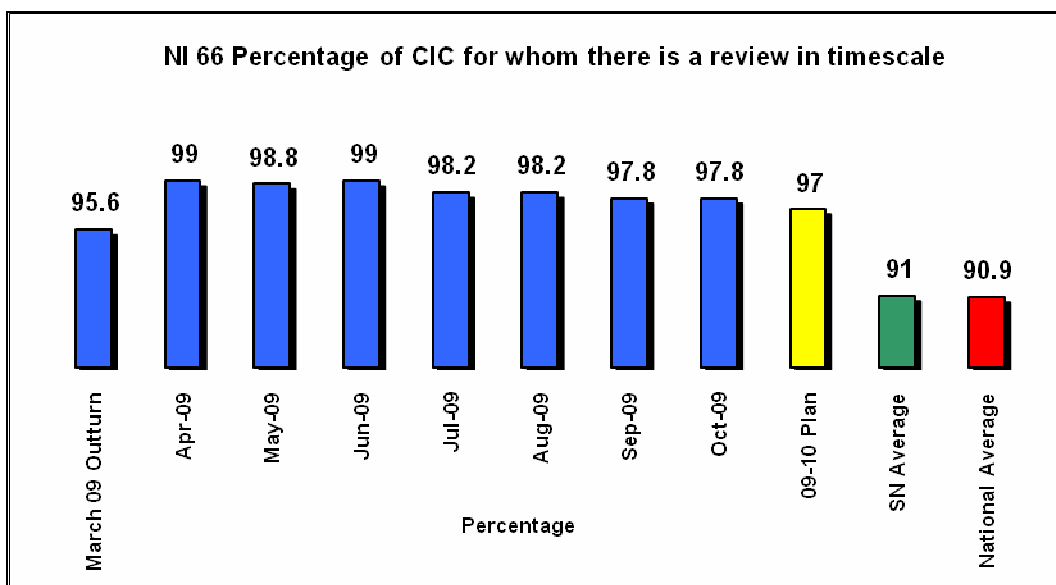
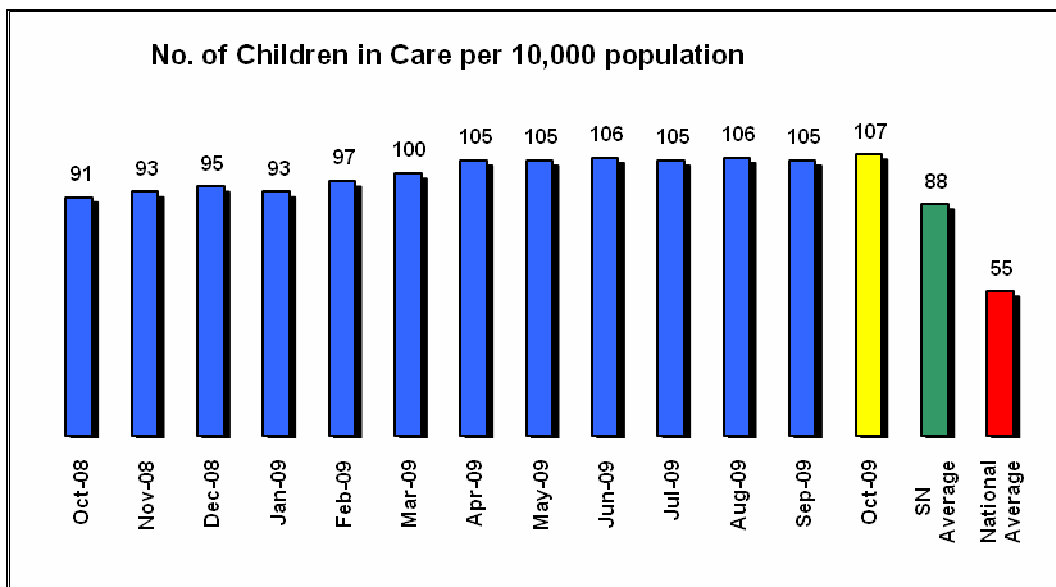


Children Subject to a CP Plan

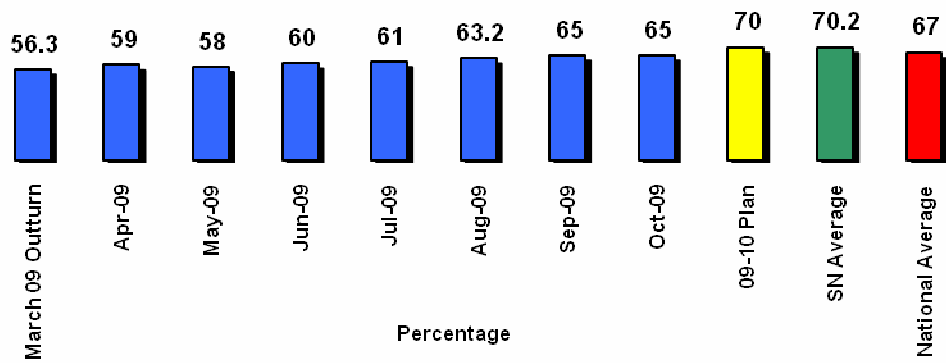




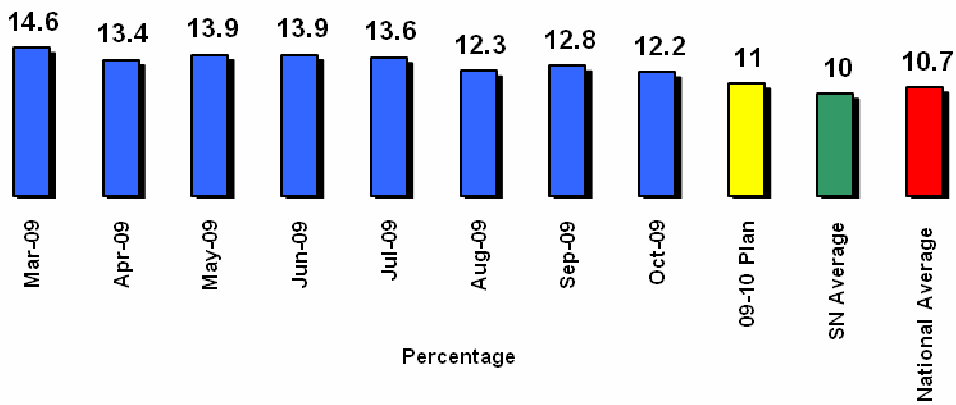
Children in Care – note that statistical neighbour averages for Children in Care are based on indicator averages for each authority as detailed breakdown for each indicator has not yet been published by Local Authority for 2008/09



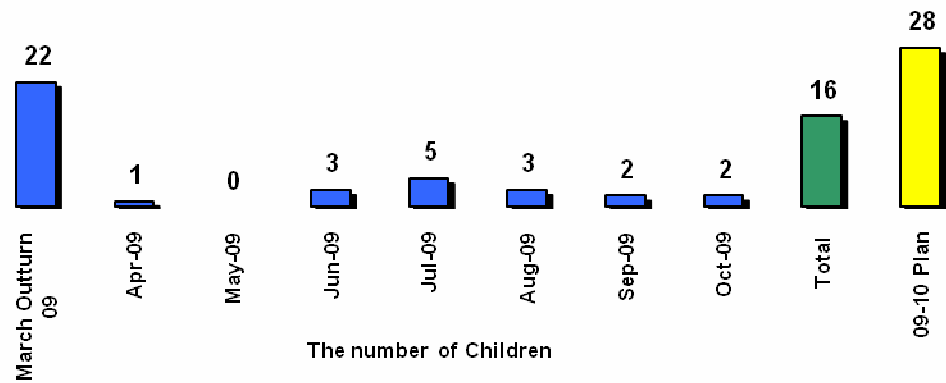
NI 63 Long term stability of CIC. Children under 16 who have been looked after for 2.5 years or more and in the same placement for at least 2 years

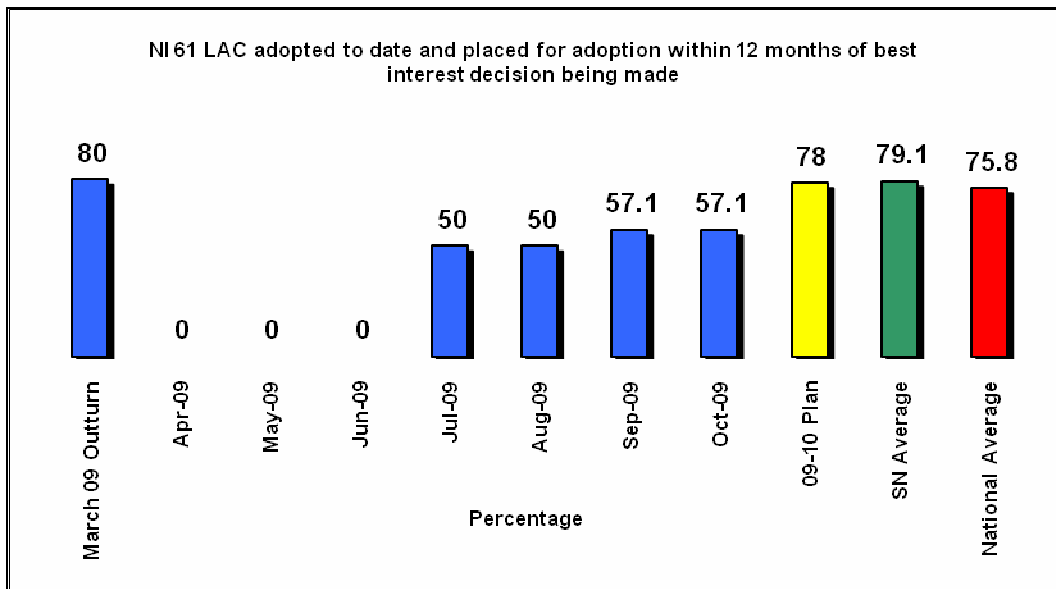


NI 62 Stability of Placements of CIC. The percentage of Children looked after at 31st March with three or more placements during the year



Adoptions and Special Guardianship of Children in Care





Care Leavers

